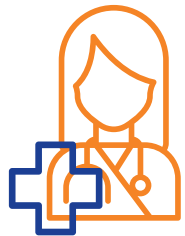


In Western Australia  
from July 2011 to June 2015 there were  
**5,325 DEATHS**  
DUE TO  
**INJURY**

HOSPITALISATIONS



2011 to 2015

**313,307**

MALE / FEMALE %



2011 to 2015

**56.3%**  
MALE

AGE RANGE



2011 to 2015

INDIVIDUALS AGED  
**25-44** EXPERIENCED THE  
HIGHEST RATE OF  
HOSPITALISATIONS

COST



2015

**207,675** BED DAYS

APPROX. **\$473,742,170**

FOCUS

In Western Australia Aboriginal peoples make up 3.1%<sup>1</sup> of the population, however **8.7%** of **injury** hospitalisations were Aboriginal peoples between 2011 and 2015.

Reference:

1. Australian Bureau of Statistics 2016, 'Western Australia, People', viewed 5 September 2017, <[www.censusdata.abs.gov.au/census\\_services/getproduct/census/2016/quickstat/5?opendocument](http://www.censusdata.abs.gov.au/census_services/getproduct/census/2016/quickstat/5?opendocument)>

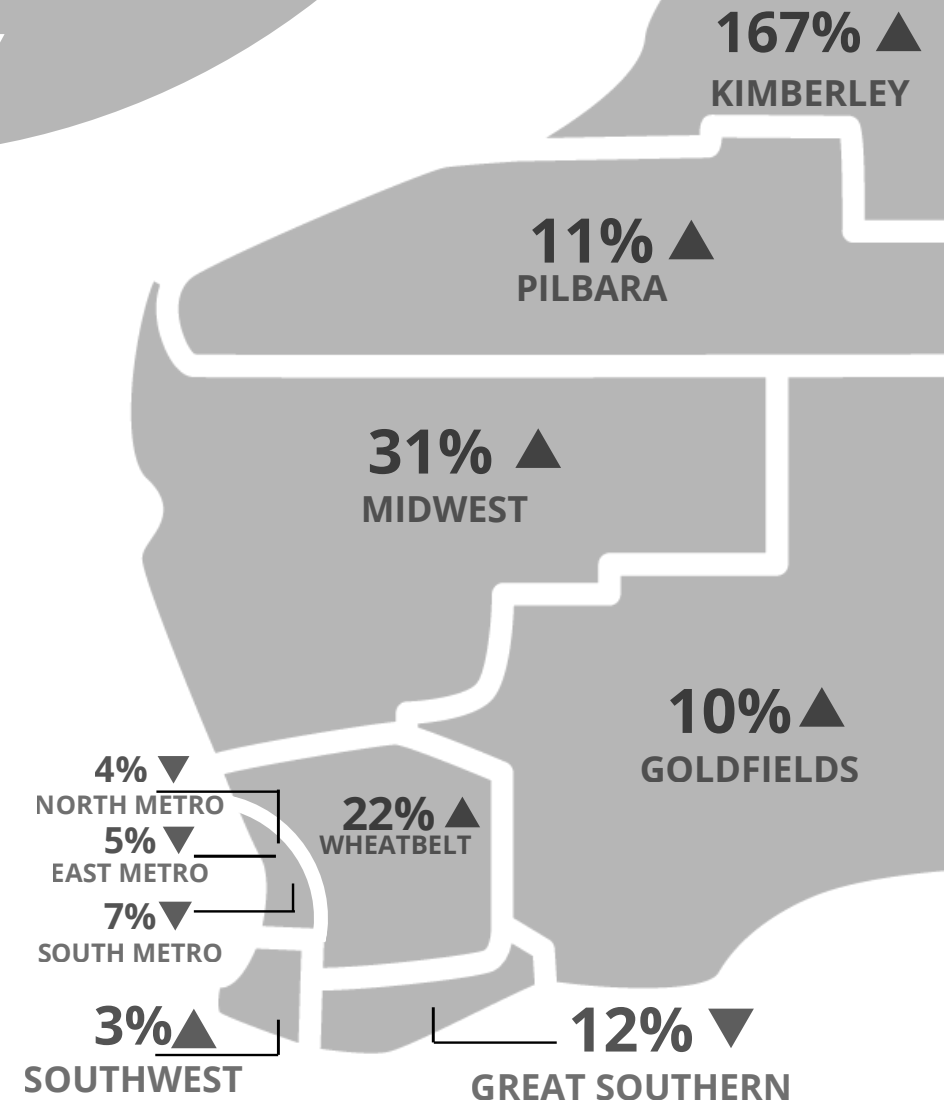
Data generated using HealthTracks Reporting tool, by the Epidemiology Branch, WA Department of Health in Collaboration with cooperative Research Centre for Spatial Informamtion (CRC-SI), March 2017.

The Know Injury program is provided by Injury Matters and funded by the Western Australian Department of Health.

Partner:



Department of Health



Difference in regional hospitalisation rates compared to the WA State hospitalisation rate, 2011 - 2015