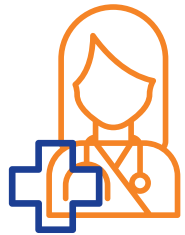




In Western Australia there were
160 DEATHS
from 2014 to 2018
DUE TO
ASSAULT

HOSPITALISATIONS



2015 to 2019

17,134

GENDER



2015 to 2019

56.8%
MALE

AGE RANGE



2015 to 2019

25-44 EXPERIENCED THE HIGHEST RATE OF HOSPITALISATIONS

COST



2019

3,474 HOSPITALISATIONS

15,668 BED DAYS

APPROX. **\$22,481,266**

ACCOUNTS FOR



2015 to 2019

2.72%
OF HOSPITALISATIONS
BY EXTERNAL CAUSES

FOCUS

In Western Australia, Aboriginal peoples make up 3.1% of the population, however **45.83%** of **assault** hospitalisations were Aboriginal peoples between 2011 and 2015.

Reference:

Data generated using HealthTracks Reporting tool, by the Epidemiology Branch, WA Department of Health in collaboration with the Cooperative Research Centre for Spatial Information (CRC-SI). March 2021.

The Know Injury program is provided by Injury Matters and funded by the Western Australian Department of Health.

Partner:



Department of Health



Difference in regional hospitalisation rates compared to the WA State hospitalisation rate, 2015 - 2019

