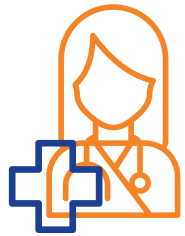




In Western Australia there were  
**1,833 DEATHS**  
from 2014 to 2018  
DUE TO  
**INTENTIONAL SELF-HARM**

**HOSPITALISATIONS**



2015 to 2019

**21,628**

**GENDER**



2015 to 2019

**65.8%**  
FEMALE

**AGE RANGE**



2015 to 2019

**25-44** EXPERIENCED THE HIGHEST RATE OF HOSPITALISATIONS

**COST**



2019

**4,063 HOSPITALISATIONS**

**22,049 BED DAYS**

APPROX. **\$31,266,550**

**ACCOUNTS FOR**



2015 to 2019

**3.43%**  
OF HOSPITALISATIONS  
BY EXTERNAL CAUSES

**FOCUS**

In Western Australia, Aboriginal peoples make up 3.1% of the population, however **11.17%** of intentional self-harm hospitalisations were Aboriginal peoples between 2011 and 2015.

Reference:

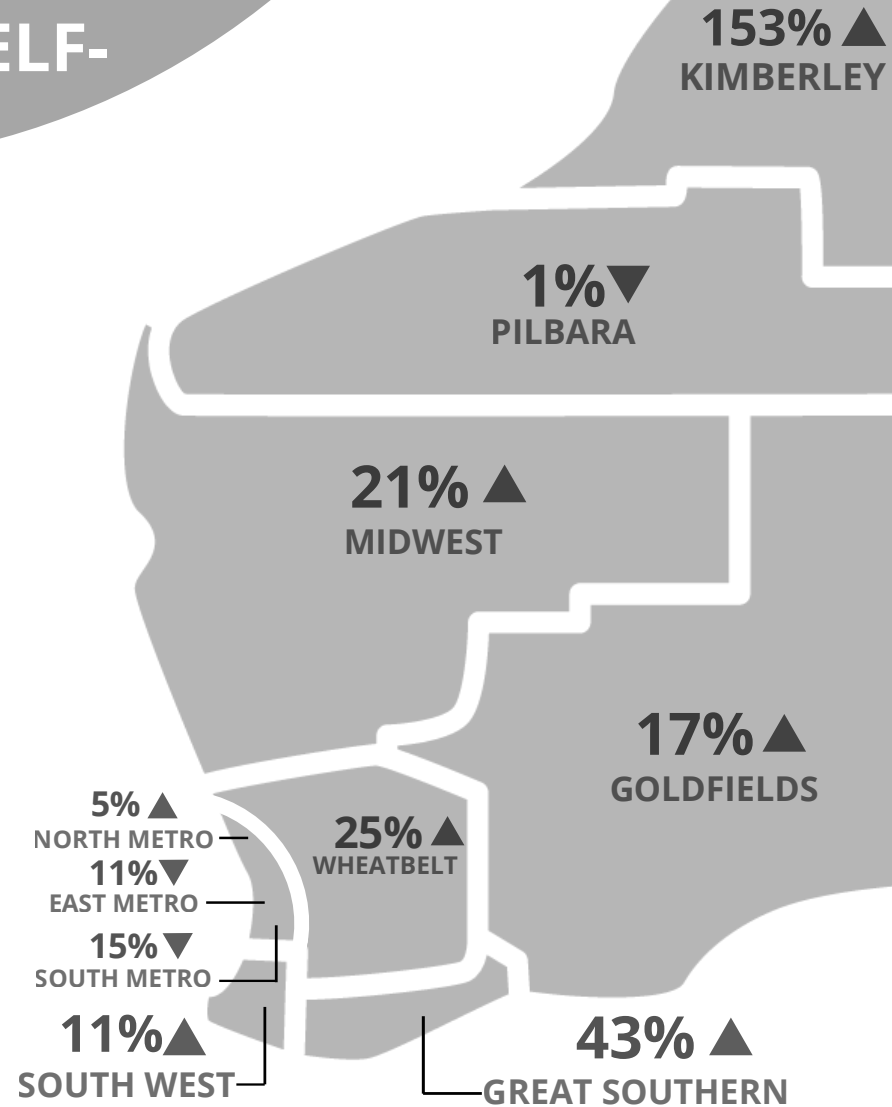
Data generated using HealthTracks Reporting tool, by the Epidemiology Branch, WA Department of Health in collaboration with the Cooperative Research Centre for Spatial Information (CRC-SI). March 2021.

The Know Injury program is provided by Injury Matters and funded by the Western Australian Department of Health.

Partner:



Department of Health



Difference in regional hospitalisation rates compared to the WA State hospitalisation rate, 2015 - 2019