

KNOW **INJURY** IN THE **KIMBERLEY**

Injury is the leading underlying cause of death in Western Australia for ages 1-44 years.¹

In 2018 throughout the Kimberley there were 15 fatalities and in 2019 there were 3,604 hospitalisations due to injury. These hospitalisations consumed 14,688 bed days at an approximate cost of \$31,025,628.

The leading causes of these hospitalisations (2015-2019) were assault, exposure to mechanical forces and falls; whilst intentional self-harm, transport and assault were the leading causes of fatalities (2014-2018).

Given that many injuries require medical attention outside of the hospital setting and that the effects of injury extend beyond the injured individual, the impact of injury in the Kimberley is significantly larger than the 3,604 hospitalisations and 15 fatalities.

Individuals aged **25-44** contributed to the highest proportion of injuries in the Kimberley from 2015 to 2019.

Aboriginal peoples experiences over **3 times** the rate of injury hospitalisations in the Kimberley in 2006 to 2015.

Injury is the physical or mental harm to a person resulting from intentional or unintentional contact with an object, substance or another person.

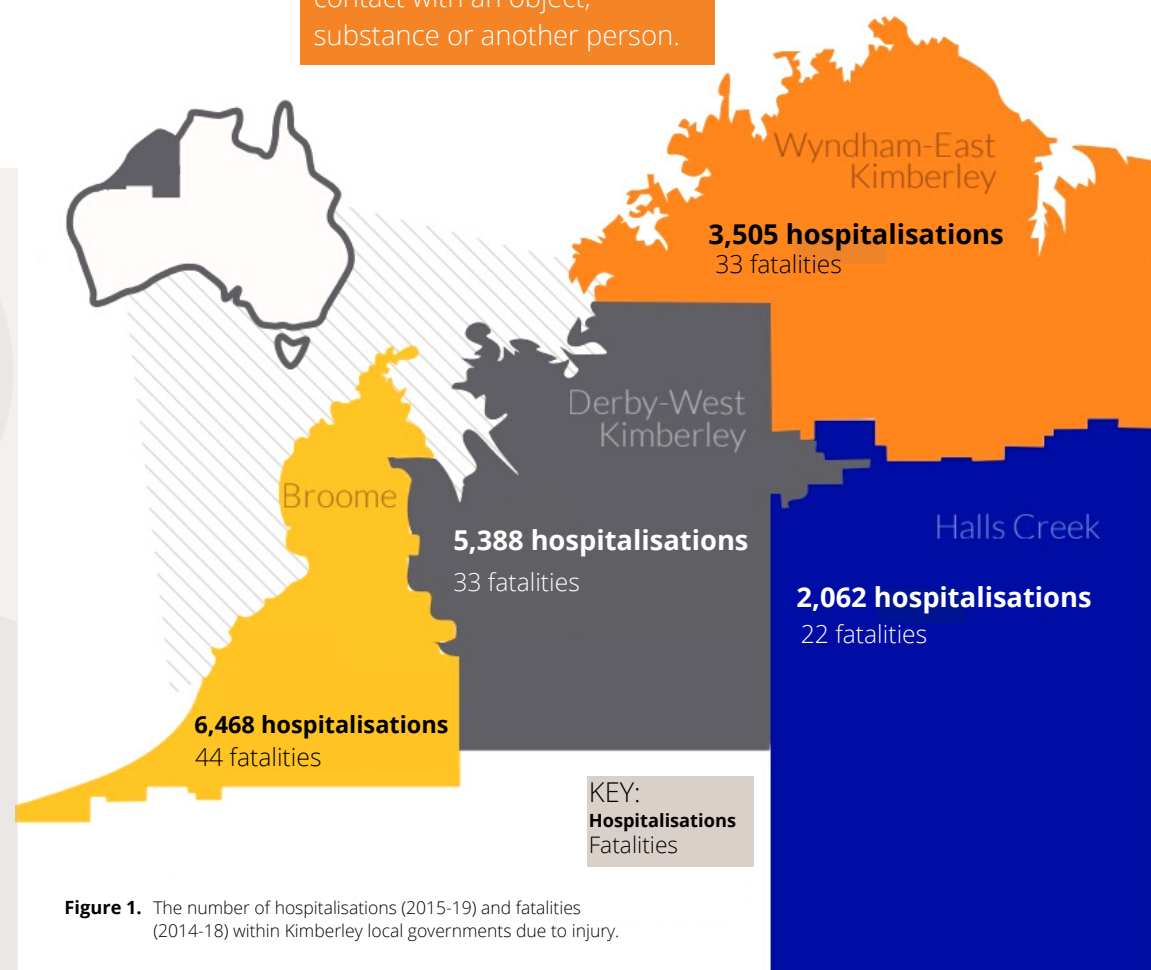


Figure 1. The number of hospitalisations (2015-19) and fatalities (2014-18) within Kimberley local governments due to injury.



The Know Injury program is provided by Injury Matters and funded by the WA Department of Health.
 t: (08) 6166 7688 e: info@knowinjury.org.au www.knowinjury.org.au

	Hospitalisations		Fatalities	
	Number	ASR*	Number	ASR*
Assault	3,479	1,884.2	10	N/A
Exposure to mechanical forces	2,612	1,466.5	N/A	N/A
Falls	2,533	1,925.9	5	N/A
Transport	961	528.8	33	17.3
Intentional self-harm	787	433.1	64	36.9
Poisoning	429	248.0	7	N/A
Burns and Scalds	322	176.1	0	N/A
Drowning	97	73.6	8	N/A

Figure 2. The number and rate of injury hospitalisations (2015-19) and fatalities (2014-18) in the Kimberley.

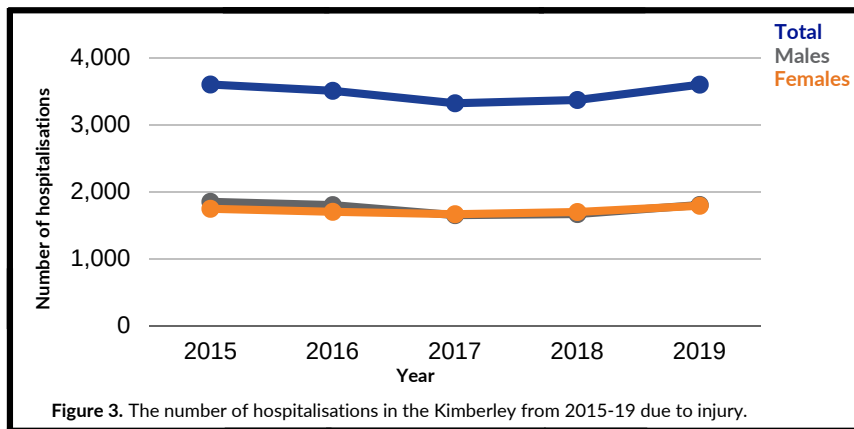


Figure 3. The number of hospitalisations in the Kimberley from 2015-19 due to injury.

Data notes

All data has been generated using HealthTracks Reporting, by the Epidemiology Branch, Department of Health WA in collaboration with the Cooperative Research Centre for Spatial Information (CRC-SI).

All hospital separations and fatalities within this report are identified using the principle diagnosis ICD-10-AM codes of S00-T98.

*ASR's (Age Standardised Rate) are standardised with the Australian 2001 standard population and expressed per 100,000 people.

Any hospitalisation or fatality counts less than five have been suppressed within this document to protect privacy and data confidentiality.

Reference

1. Australian Bureau of Statistics. 3303.0 Causes of Death, Western Australia, 2019. (2020).

How can we reduce the impact of injury in the Kimberley?

Gaining an insight into the prevalence of injury within the Kimberley region can assist in identifying injury areas which may require targeted prevention interventions. Given the incidence of assault, intentional self-harm, falls and transport in the Kimberley some actions which can be taken to reduce their prevalence include;

ASSAULT

- Increase the capacity of first responders intervening in cases of family and domestic violence.
- Restrict alcohol advertising at sporting venues.



INTENTIONAL SELF-HARM

- Support local mental health professionals to complete Mental Health First Aid training.
- Promote the use of mental health and counselling services.



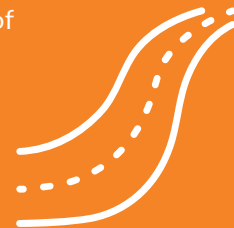
FALLS

- Engage in Stay On Your Feet® campaigns to increase community members' awareness of actions they can take to reduce their risk of falling.
- Promote local strength and balance exercise classes.



TRANSPORT

- Develop interventions which focus on the cornerstones of WA's Road Safety Strategy.
- Improve road infrastructure by sealing shoulders, installing audible edge lines, removing roadside hazards and installing safety barriers.



Visit www.knowinjury.org.au/know/injury-topics for additional injury prevention interventions.

Injury Matters acknowledge the Traditional Custodians of the lands and waters throughout Western Australia and pay respects to Elders past and present. We also recognise Aboriginal and Torres Strait Islander peoples' continuing connection to land, waters and community across Western Australia.